



Ultimate ECO Coffee Roastery Tour and Tasting Session

Organiser Details:

Chanel Cornelius
01747 228 260/30 – 07920 841 918
Chanel@918coffee.com

Tour Host:

Justin Cornelius

Price:

£75.00 – Max 10 Persons per Tour

Programme Schedule:

9:15am	–	9:30am	(15mins)	Arrival & Registration
9:30am	–	10:15am	(45mins)	Tour of the ECO Coffee Roastery
10:15am	–	10:30am	(15mins)	ECO ROAST Technology™
10:30am	–	11:00am	(30mins)	Coffee, Origins, Farms & Flavours
11:00am	–	11:15am	(15mins)	Coffee & the Environment
11:15am	–	11:45am	(30mins)	Coffee Tasting & Cake
11:45am	–	12:00pm	(15mins)	Questions
12:00pm				Sign Out & Departure

Please feel free to visit our Roastery Outlet Store before you leave.



Who We Are



918 Coffee Co is a multi award winning, family run Eco Coffee Roastery based in Shaftesbury, Dorset.

We import and roast hundreds of different coffees from around the world. We work directly with the farmer wherever possible and also use existing trade routes.

The primary focus of our business is to produce freshly roasted, Deliciously Responsible Coffee from the finest quality, ethically sourced, coffee beans. Nearly every aspect of our business is in some way related to our ethical and environmental ethos that is at the very core of our business. We pride ourselves in our environmental credentials and have won numerous awards relating to our environmental awareness and benefits.

The Coffee Industry is huge and Coffee is the 2nd largest traded commodity in the world! Within an industry this vast, there is inevitably some waste.

Billions of Cups of Coffee are consumed annually around the globe, creating a staggering amount of waste for landfill and harmful CO2 Emissions. We are as passionate about our environment as we are about our coffee and also being a part of the coffee industry we were contributing to this problem, which made us extremely unhappy, and so our goal was to do something about it, stop this happening, or significantly reduce it at least.

Our major innovation focuses solely on the production of great tasting quality coffees and the reduction of waste in the industry, lowering carbon and methane emissions and providing a ZERO WASTE solution for both our customers and the environment to benefit from.

We supply a variety of customers ranging from Coffee Shops, Deli's and Farm Shops to The Eden Project, The House of Commons and we also have a retail range in Waitrose stores nationwide.

We invented the internationally recognised Eco Roast Technology - a Zero Waste Circular Process providing the Complete 'End-of-Life' Coffee Solution!

We take pride in our active commitment to the social and environmental impacts of the coffee industry. We are proud members of the Fairtrade Foundation, Rainforest Alliance, UTZ, The Green Earth Appeal and Ambassadors of The International Green Organisation.

We are as passionate about the environment as we are about our coffee, with our business ethics and ethos '*there is no such thing as waste*'. By tackling the waste the industry creates at its destination, we are helping deliver a cleaner tomorrow.

If you have any questions or queries regarding this, please do not hesitate to contact me.

We look forward to meeting you!

918 Coffee Co Limited

T. 01747 228 260 / 01747 228 230

E. Enquiries@918coffee.com

<http://www.918coffee.com>



Inventors of globally recognised Coffe-Eco System & creators of ECO ROAST Technology
The Roastery, Semley Business Park, Station Road, Shaftesbury SP7 9AN

Overview

Explore what goes on behind the scenes of a Coffee Roastery with this ***Ultimate ECO Coffee Roastery Tour and Tasting Session***.

Founded in 2009, multi-award winning, 918 Coffee Co has become one of the World's most Environmentally Friendly Sustainable Coffee Roasters. With a guided tour of the Eco Roastery, you'll be getting a unique insight into our techniques, sustainable values and learn all about what goes into crafting our beloved coffee blends. Follow the journey from bean-to-cup and learn about our Eco Roast Technology, before enjoying a taste testing experience.

Once you've discovered what makes a good coffee great, you'll then explore your taste sensations with a Coffee Tasting Session and learn how to make a delicious responsible coffee, before indulging in a delicious slice of freshly baked cake from our local confectioners. You'll finish things off with a bag of Eco Roasted Coffee to take away with you.

What's Included?

Guided tour of our Coffee Roastery with a passionate coffee expert

See the process of coffee-making from bean to cup

Enjoy a taste testing experience, and discover what makes a great cup

Enjoy your chosen favourite Coffee with a slice of cake

Coffee Gift to take home

What happens on the day?

Your experience will consist of a full factory tour of 918 Coffee's Eco Roastery in Semley, Shaftesbury. Watch the journey from bean to cup with state-of-the-art Eco Roast processes.

Once you've discovered what makes a good coffee great, you'll then explore your taste sensations with a Coffee Tasting Session and learn how to make a delicious responsible coffee.

Finish things off with your choice of deliciously responsible coffee and a slice of cake, before heading home with a coffee gift and plenty of newfound knowledge.

Validity

Your voucher is valid for **12 months** from the date of issue. Please note you must have booked and taken your experience before the expiry date

Participant Guidelines

Because of the nature of the building and its activities, if you require special assistance due to any disabilities please contact the Roastery in advance so that we can make the appropriate arrangements to accommodate your request. In specific circumstances, your carer might be admitted free of charge to support you during the tour. Please contact the Roastery for further information before booking

The experience content, equipment used and restrictions may vary

CCTV will be in operation throughout the tour

Availability

The tour runs on a Saturday morning, twice a month, from 9:30am to 12pm. All bookings are subject to availability.

We recommend you book at least four weeks in advance to ensure that dates are available.

Please arrive 5 to 10 minutes before the agreed start time. Late arrivals may be turned away, and may be unable to re-book: at The Roastery's discretion.

Need Accommodation?

Why not extend your visit to Dorset and stay at our beautiful 3-4 Bedroom Detached house, The Maple.

Our Eco Coffee Roastery is just 10 minutes drive from the property. The Maple is a beautiful detached house offering two reception rooms, kitchen, breakfast room, conservatory, downstairs toilet, family bathroom, shared en-suite facilities for the Master Bedroom & Bedroom 4. Please note: Bedroom 4 is accessed via the Master Bedroom and connects to the Master Bedroom. Suitable for children.



Located in a convenient suburb for connecting you to the beauties of the surrounding area, ease for travel connections via the direct Waterloo-Exeter trainline and the A303 (dual carriageway crossing southwest to southeast). Closeby: Stourhead Gardens, Stonehenge, Longleat Safari Park, Glastonbury, Jurassic Coast, Shaftesbury

This detached property is set in the popular quiet Wyke area of North Dorset. This three double bedroom home (plus single bedroom off the Master) is perfect for a family break or a business event. There is a large gravel driveway, a small contained garden to the rear & Free WiFi is available throughout.

The region is brimming with historic sites so if you're a bit of a fan of delving into the past, Sherborne is the perfect place to start. With two castles, an Abbey and lots of medieval buildings to admire, this delightful town also has plenty of National Trust homes and gardens to discover.

Just a few minutes drive away, a popular spot to visit is the breath-taking town of Shaftesbury which is one of the highest and oldest towns in Britain. Rich in history and oozing charm, Shaftesbury's Gold Hill is a scenic location that was once used in a famous Hovis bread advertisement and offers breath-taking views over the Blackmoor Vale.

Not one to miss during your visit, there's also wonderful old churches, houses and gardens to visit, and many great walks and cycling trails. Make sure you stop off in one of the pretty tea shops and chat to some of the friendly locals, or grab a locally brewed ale in one of the traditional pubs.

For impromptu rainy days, the town of Blandford Forum is home to some interesting museums such as the Blandford Forum Town Museum and The Royal Signals Museum or stroll around the town which is full of beautiful Georgian architecture.

To keep the kids entertained, you'll find plenty of fun attractions in the area, great for all ages. Crazy Monsters is North Dorset's largest indoor soft play area and is a great place to let the kids burn off some energy with its adventure play zone and toddler zone that is perfect for under 4's.

Stourhead is one of the world's finest landscape gardens and in autumn you can see vistas highlighted with burnished leaves and rusty colour palettes.

In the summer months the gardens are bursting with vibrant colour, a spectacular display not to be missed.

With a lake at its centre, the garden is planned with temples and follies and a planting scheme which allows the colours to wash through the landscape of a 6-8 week period.

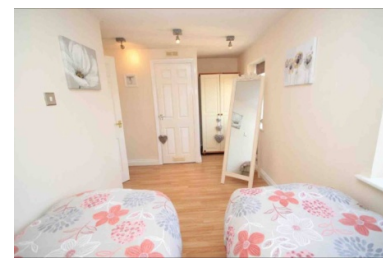
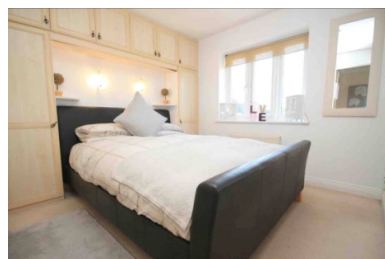
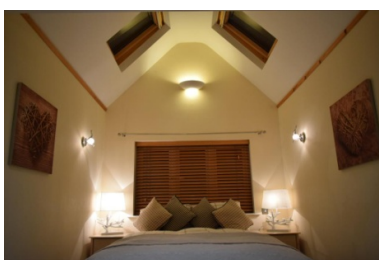
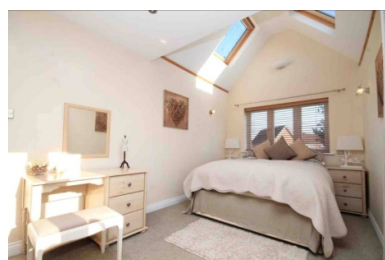
Though autumn never keeps to the same schedule, towards the end of August the North American maples have begun to turn a scarlet red, signifying the start of the autumn season. Around this time the Japanese acers, hornbeam, chestnuts, also start their vivid display. A little later in autumn the Tulip trees take on a yellow hue while the oak and beech finish off the season with their bright oranges late in October.

Throughout autumn the garden draws in thousands of people to enjoy the spectacular display of colour, and to help keep you updated Head Gardener Alan, records a weekly leaf line with what the garden is looking like that week.

A team of wonderful volunteers lead daily autumn walks at 11am and 1.30pm. These start at visitor reception and take you into the garden by the family home, thus giving you the best views. The walk takes about an hour and leaves you by the lakeside to continue on around the garden and enjoy the day at your own pace. These are one of the best ways to discover more about Stourhead. Places on these tours are limited to 25 people.

With plenty of things to do in the area, you can create a wonderful memorable holiday experience and rest in the comforts of our home after a days adventures!

Any questions please do not hesitate to contact me. I look forward to welcoming you to The Maple.



Book your reservation today!

****The Maple is a widely advertised holiday home and may not always be available for the Eco Roastery Tour dates. Please inform your booker at the time of purchasing your experience, should you wish to reserve the accommodation.***